

# LK3–B434EMark II

## Electronic Lockstitch Pattern Tacker



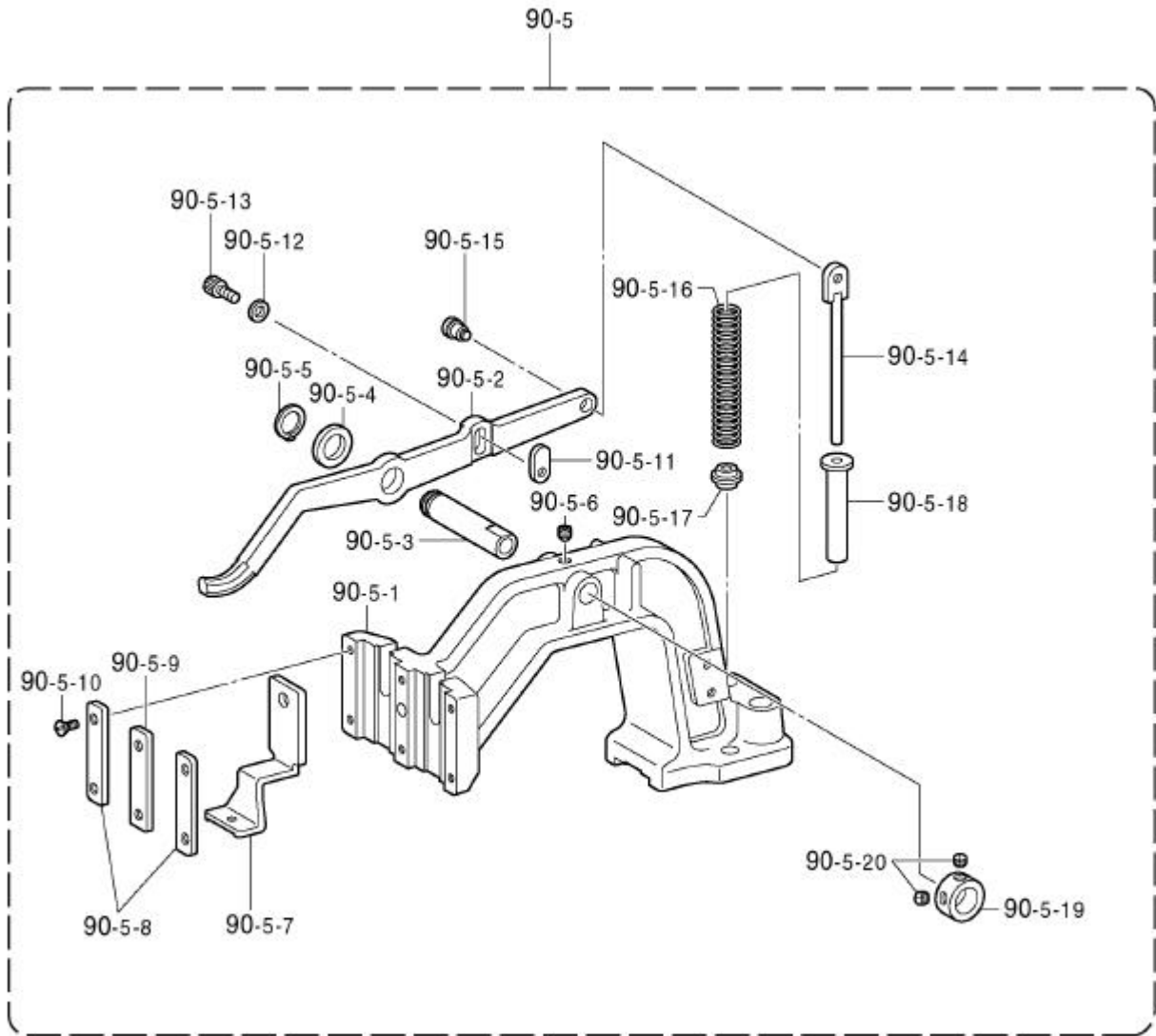
### Specifications

Model	LK3–B434E Mark II
Application	Medium, heavy, extra heavy materials
Stitch formation	Single needle lock stitch
Max. sewing speed	2,500 rpm (Pitch 3 mm *1)
Max. pattern size	Max. 100×60 mm
Feed mechanism	R–θintermittent feed mechanism (pulse–motor driven mechanism)
Stitch length	0.1–10.0 mm
No. of stitches	Variable
Max. stitch number	20,000 stitches (including 10,000 stitches which can be added)
Work clamp lifter	Solenoid type or pneumatic type
Work clamp height	For solenoid : 17 mm max. For pneumatic : 25 mm max. (Max. 17 mm for inner clamping device)
Hook	Shuttle hook (×2 shuttle hook, optional)
Wiper device	Standard equipment
Thread trimmer device	Standard equipment
Thread take-up device	Standard equipment
Safety equipment	Built-in stopping mechanism
Data storage method	PROM (Any sewing pattern can be added using BAS–PC/300)
No. of user programs	16
No. of cycle programs	4
No. of stored data	Up to 100 patterns can be added. Total number of stitches of stored data which can be added is within 10,000.
Motor	Three phase 400W induction motor
Weights	Machine head: 49kg Operation panel: 0.6kg Control box: 9–19kg (depending on destination)
Power supply	Single phase 220–230V Three phase 220, 380, 400, 415V Max. electric power consumption; 600VA

\*1: Because of the R–θ feed, sewing at maximum speed may not be possible for some sewing data, even if the sewing pitch is set to 3 mm or less.

## Optional parts Feed mechanism

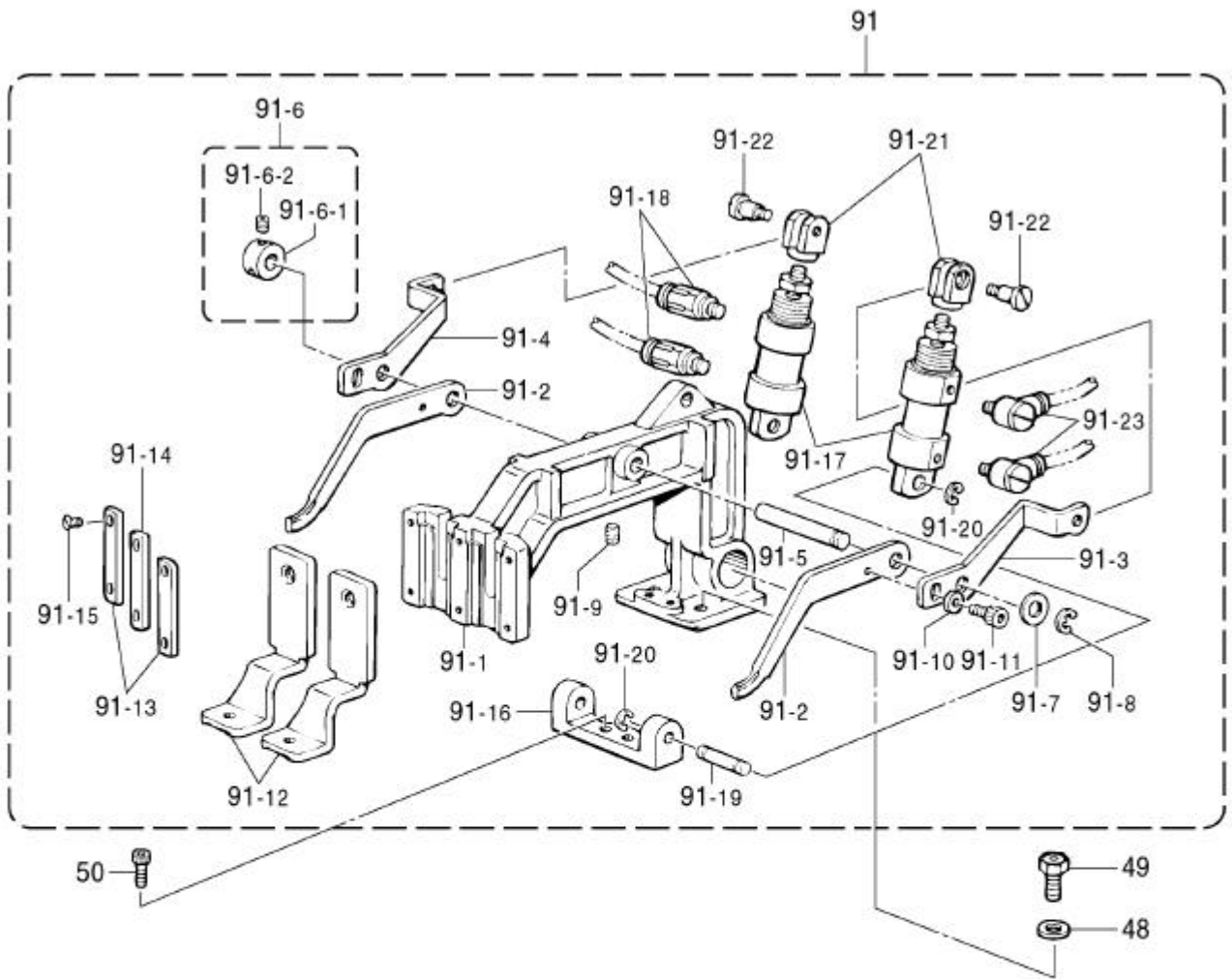
<For solenoid type>



Ref. No.	Part name	Part code	Q'ty
<b>&lt;For solenoid type&gt;</b>			
90-5	Work clamp arm assy, G	S42093-200	1
90-5-1	Work clamp arm	153364-000	1
90-5-2	Work clamp arm lever, L	S42089-001	1
90-5-3	Work clamp arm lever shaft	153367-001	1
90-5-4	Spacer	142628-001	1
90-5-5	Retaining ring, external C11	048110-142	1
90-5-6	Set screw, socket SM 5.95×5	152718-001	1
90-5-7	Work clamp, S	153368-001	1
90-5-8	Work clamp guide plate, A	153369-001	2
90-5-9	Work clamp guide plate, B	153370-001	1
90-5-10	Screw, flat SM3.57	107038-003	6
90-5-11	Work clamp arm lever plate	S52099-001	1
90-5-12	Washer	140407-002	1
90-5-13	Bolt, socket M5×8	018500-822	1
90-5-14	Spring guide rod	153570-001	1
90-5-15	Shoulder screw, socket SM4.76	145478-101	1
90-5-16	Spring, A compression	153568-001	1
90-5-17	Spacer	152788-000	1
90-5-18	Collar	153567-000	1
90-5-19	Set screw collar	146581-002	1
90-5-20	Set screw, SM5.95	100260-001	2

# Feed mechanism

<For pneumatic type>

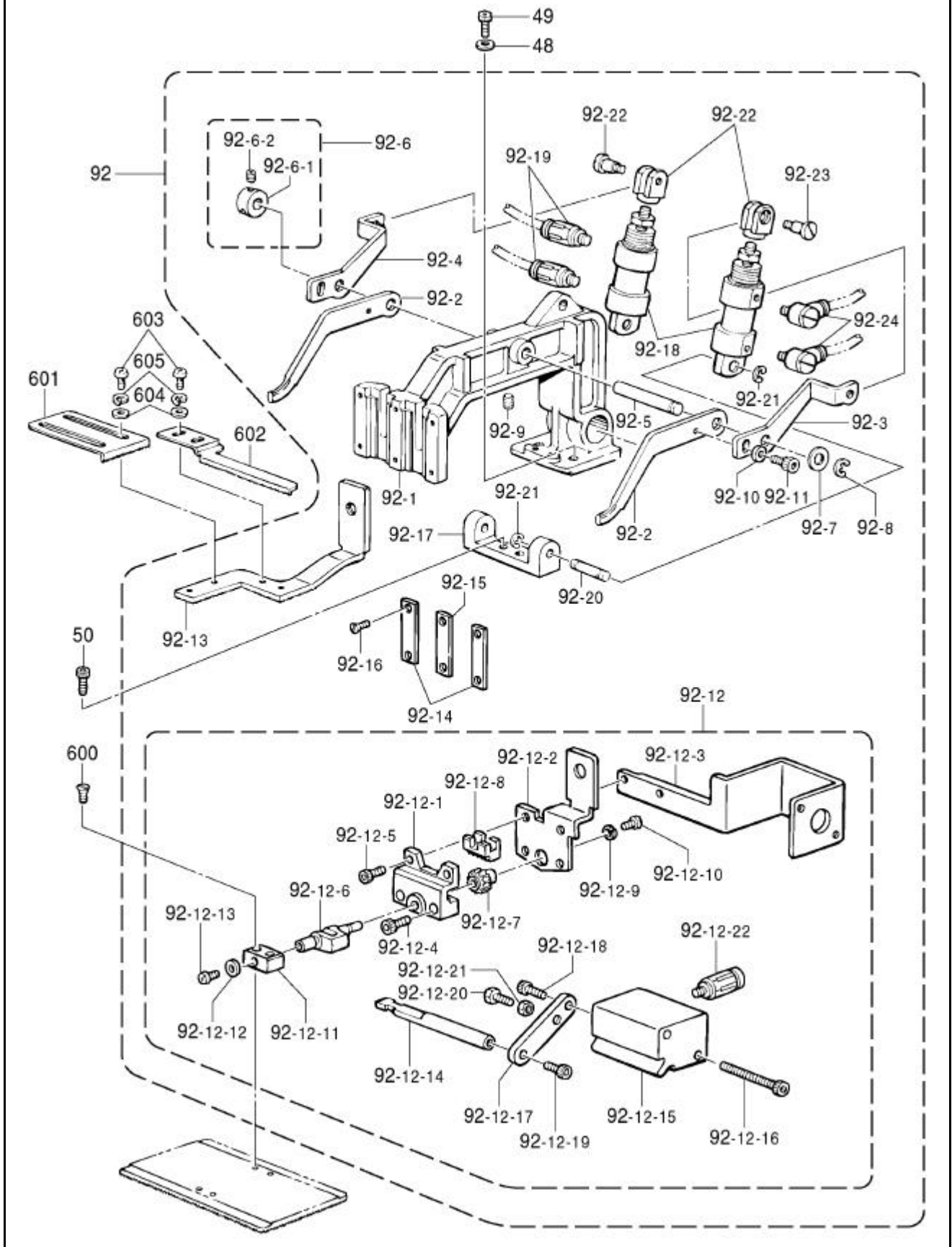


## Feed mechanism

Ref. No.	Part name	Part code	Q'ty
<b>&lt;For pneumatic type&gt;</b>			
48	Washer, plain M6	025060-232	2
49	Bolt, w/socket SM5.95 – 28 × 14	S39110-001	2
50	Bolt, socket M5 × 10	018501-022	2
91	Work clamp arm assy, 434E air	S53091-001	1
91-1	Work clamp arm, Z34 air	S41658-000	1
91-2	Work clamp arm lever, F	S53092-001	2
91-3	Work clamp arm lever, RR	S10377-101	1
91-4	Work clamp arm lever, RL	S10378-101	1
91-5	Lever shaft, ;w-clamp arm	S10058-001	1
91-6	Set screw collar assy	S21776-001	1
91-6-1	Set screw collar	139096-001	1
91-6-2	Set screw, socket (CP) SM4.37	014680-622	2
91-7	Ring, thrust	143591-001	1
91-8	Retaining ring, E5	048050-342	1
91-9	Set screw, socket SM5.95	014760-622	1
91-10	Washer, plain M4	025040-232	2
91-11	Bolt, socket M4 × 6	018400-622	2
91-12	Work clamp, 434E air	S41660-001	2
91-13	Work clamp guide plate, A	153369-001	2
91-14	Work clamp guide plate, B	153370-001	1
91-15	Screw, flat SM3.57	107038-003	6
91-16	Cylinder support	S53094-001	1
91-17	Air cylinder, ;15-18	S53095-000	2
91-18	Half union, ;Q4M5	S18415-101	2
91-19	Clevis pin	S03800-001	2
91-20	Retaining ring, E4	048040-342	4
91-21	Cylinder joint	S53096-001	2
91-22	Roller shaft	110168-001	2
91-23	Elbow, M5	S41271-000	2
903	Work clamp, 434EMK2 air	S51102-001	1

# Feed mechanism

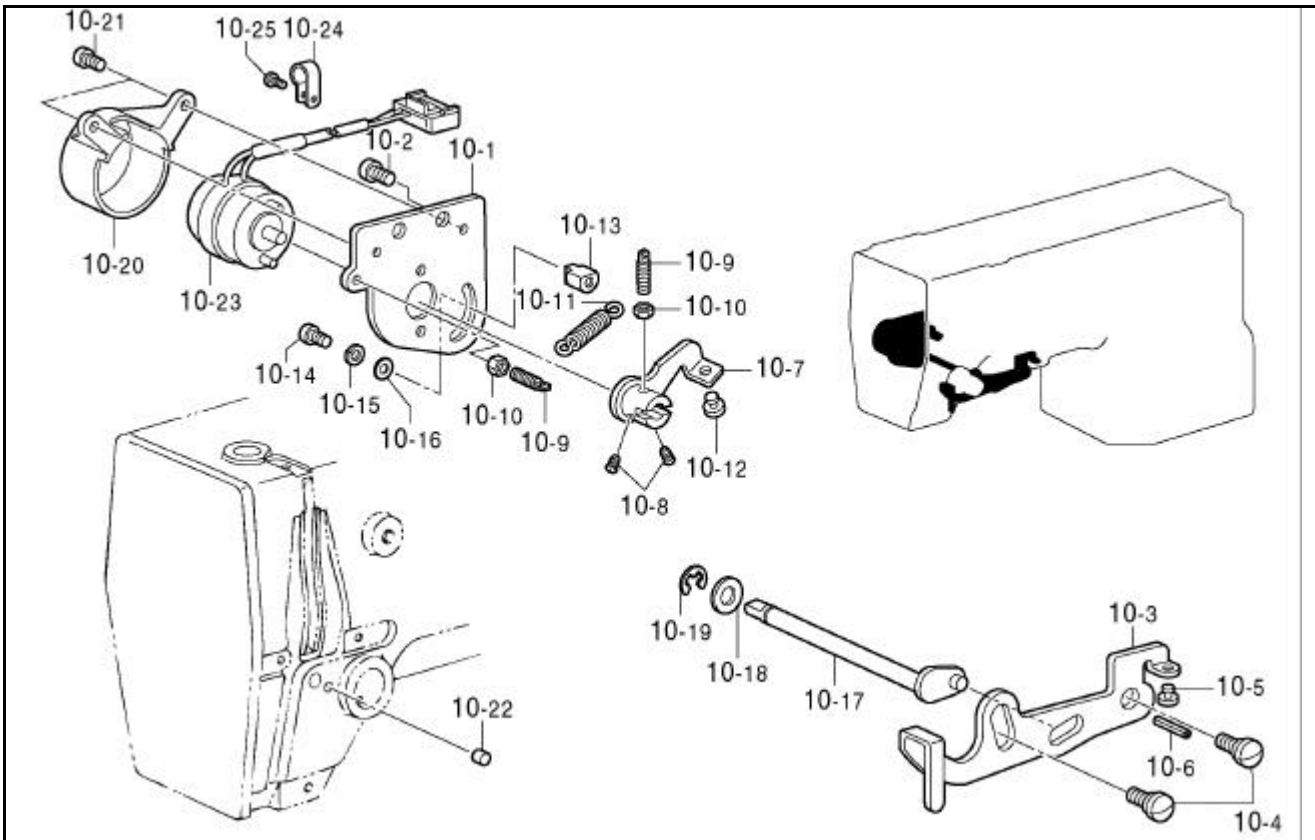
<For inner clamping device>



## Feed mechanism

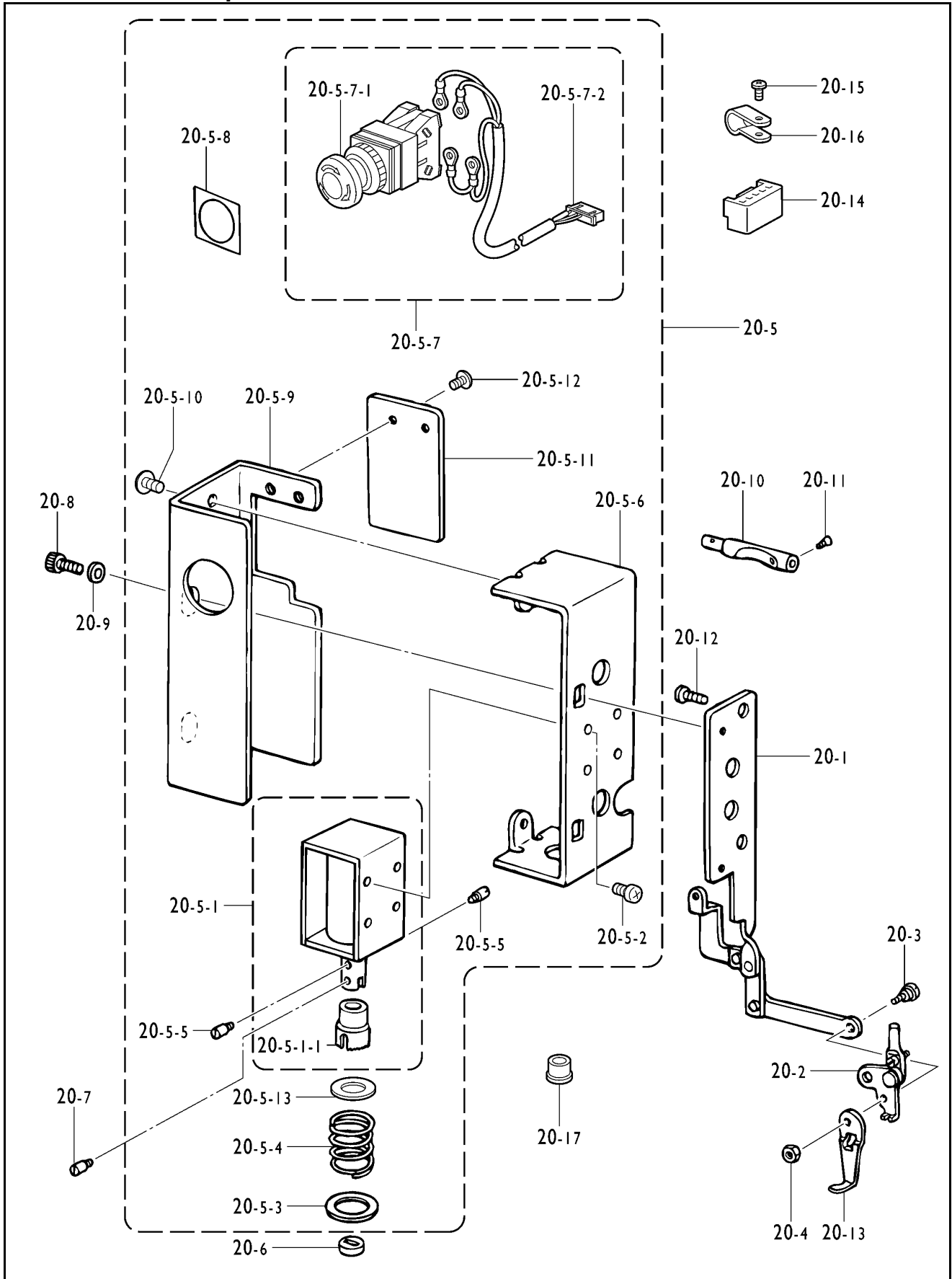
Ref. No.	Part name	Part code	Q'ty
<b>&lt; For inner clamping device&gt;</b>			
48	Washer, plain M6	025060-232	2
49	Bolt, w/socket SM5.95 – 28 × 14	S39110-001	2
50	Bolt, socket M5 × 10	018501-022	2
92	Work clamp arm assy, 434EREV	S53098-001	1
92-1	Work clamp arm, Z34 air	S41658-000	1
92-2	Work clamp arm lever, F	S53092-001	2
92-3	Work clamp arm lever, RR	S10377-101	1
92-4	Work clamp arm lever, RL	S10378-101	1
92-5	Lever shaft, ;w-clamp arm	S10058-001	1
92-6	Set screw collar assy	S21776-001	1
92-6-1	Set screw collar	139096-001	1
92-6-2	Set screw, socket (CP) SM4.37	014680-622	2
92-7	Ring, thrust	143591-001	1
92-8	Retaining ring, E5	048050-342	1
92-9	Set screw, socket SM5.95	014760-622	1
92-10	Washer, plain M4	025040-232	2
92-11	Bolt, socket M4 × 6	018400-622	2
92-12	Work clamp crank assy, 434E	S42007-001	1
92-12-1	Work clamp crank holder, A	S12634-009	1
92-12-2	Work clamp crank holder, B	S42008-001	1
92-12-3	Reverse cylinder base	S42019-001	1
92-12-4	Bolt, socket M3 × 12	018301-236	2
92-12-5	Bolt, socket M3 × 8	018300836	2
92-12-6	Work clamp crank, LA	S05665-001	1
92-12-7	Reverse gear	154235-001	1
92-12-8	Reverse rack	154236-001	1
92-12-9	Washer	145087-001	1
92-12-10	Set screw, SM3.18	149831-101	1
92-12-11	Work clamp plate holder, L	154237-001	1
92-12-12	Washer, plain S3.5	025350-132	1
92-12-13	Screw, SM3.57 – 40 × 5	100242-003	1
92-12-14	Reverse rod	S42020-001	1
92-12-15	Reverse cylinder	S12639-001	1
92-12-16	Bolt, socket M3 × 35	S12642-009	2
92-12-17	Reverse shaft joint	S42021-001	1
92-12-18	Bolt, socket M3 × 8	018300-836	1
92-12-19	Bolt, socket M3 × 8	018300-836	1
92-12-20	Bolt, M5 × 12	017501-216	1
92-12-21	Nut, 2 M5	021500-216	1
92-12-22	Half union, ;Q4M5	S18415-101	2
92-13	Outer work clamp	S42009-101	1
92-14	Work clamp guide plate, A	153369-001	2
92-15	Work clamp guide plate, B	153370-001	1
92-16	Screw, flat SM3.57	107038-003	6
92-17	Cylinder support	S53094-001	1
92-18	Air cylinder, ;15-18	S53095-000	2
92-19	Half union, ;Q4M5	S18415-101	2
92-20	Clevis pin	S03800-001	2
92-21	Retaining ring, E4	048040-342	4
92-22	Cylinder joint	S53096-001	2
92-23	Roller shaft	110168-001	2
92-24	Elbow, M5	S41271-000	2
600	Screw, flat SM3.18	117291-002	2
601	Positioning plate, L	154252-001	1
602	Positioning plate, R	154253-001	1
603	Screw, pan SM3.57-40x5	062670-512	4
604	Washer, plain L3.5	025350-332	4
605	Washer, spring 2-3.5	028350-242	4

## Attachment set



Ref. No.	Part name	Part code	Q'ty
10	Thread take-up device	S49956-001	1
10-1	Setting plate, ; solenoid	S49659-001	1
10-2	Screw, pan SM4.76 – 32 × 8	062710-812	2
10-3	Lever	S49660-001	1
10-4	Shoulder screw, SM4.76	107321-003	2
10-5	Cushion	S19748-001	1
10-6	Pin, spring roll AW4	047401-442	1
10-7	Solenoid joint	S49661-001	1
10-8	Set screw, SM3.57	S01998-001	2
10-9	Spring hook	110251-001	2
10-10	Nut, 1 SM3.57	021670-102	2
10-11	Spring, extension	S34883-001	1
10-12	Cushion	S19748-001	1
10-13	Nut, SM3.57	S49663-001	1
10-14	Screw, pan SM3.57 – 40 × 10	062671-012	1
10-15	Washer, spring 2 - 3.5	028350-242	1
10-16	Washer, plain L3.5	025350-332	1
10-17	Crank, ; t/take-up lever	S49662-001	1
10-18	Washer, plain	155559-001	1
10-19	Retaining ring, E4	048040-342	1
10-20	Cover, ; t/take-up solenoid	S49664-000	1
10-21	Screw, pan SM3.57 – 40 × 8	062670-812	2
10-22	Rubber cap, 5.3	S20878-000	1
10-23	Solenoid assy, ; t/wiper	S49464-000	1
10-24	Cord holder, 5N	S00480-000	3
10-25	Screw, bind SM3.57 – 40 × 6	060670-612	3

# Solenoid thread wiper

















## Solenoid thread wiper




Ref. No.	Part name	Part code	Q'ty
20	Thread wiper solenoid assy	S49615-009	1
20-1	Connect. rod assy, ; t-wiper	S41656-001	1
20-2	Thread wiper arm assy	S44600-001	1
20-3	Shoulder screw, SM3.57	153112-001	1
20-4	Nut, 2 SM3.57	021670-202	1
20-5	Solenoid box assy	S49616-009	1
20-5-1	Thread wiper solenoid assy	S49619-001	1
20-5-1-1	Plunger rubber	S41204-050	1
20-5-2	Screw, pan M3 x 6	062300-612	4
20-5-3	Washer, plain	S41205-001	1
20-5-4	Spring, t-wiper	S41206-001	1
20-5-5	Plunger pin	S25456-001	2
20-5-6	Setting plate, W-sol.	S42017-109	1
20-5-7	EM-lock switch & harness assy	S49482-000	1
20-5-7-1	Switch, ; AVS311N	S32335-000	1
20-5-7-2	EM-switch harness	S49466-000	1
20-5-8	Spacer, 3 ; EM-switch	S37057-001	1
20-5-9	Solenoid cover, W	S42018-109	1
20-5-10	Screw, truss M4 x 6	008400-604	2
20-5-11	Solenoid cover lid, E	S37806-109	1
20-5-12	Screw, truss M4 x 6	008400-604	2
20-5-13	Washer, plain 13	115007-001	1
20-6	Spacer rubber	S41207-000	1
20-7	Plunger pin	S25456-001	1
20-8	Bolt, socket M4 x 6	018400-632	2
20-9	Washer	100645-003	2
20-10	Tension release rod, DW	S41657-001	1
20-11	Screw, flat M3.5 x 6	061350-616	1
20-12	Screw, pan SM4.37 - 40 x 8	062680-812	2
20-13	Thread wiper, A	156206-001	1
20-14	Connector, ; VHR-5N	S49947-000	1
20-15	Screw, bind SM3.57-40 x 6	060670-612	3
20-16	Cord holder, 7N	149287-000	3
20-17	Rubber cap, 15.5	104449-009	1

## Different parts list

Spec. Part name	Medium materials	Heavy materials	Inner clamping device	Extra heavy materials
Needle hole plate 	(φ2.2) S49980-001 FM	(φ2.6) S10212-101 E	(φ2.2) S49980-001 FM	(φ2.6) S10212-101 E
Bobbin case assy 	159610-201 A	152690-301 B	159610-201 A	152690-301 B
	S15902-401 LA			
Tension spring 	154339-001 A	154340-001 B	154339-001 A	154340-001 B
	S16074-101 LA			
Screw 	154341-001			
	S16492-101 LA			
Spring, anti-spin 	159612-001 A	154342-001 B	159612-001 A	154342-001 B
	S15667-001 LA			
Bobbin 	159613-051			154663-001 B
	S44633-001 LAN			
Shuttle hook assy w/box 	152685-903 A	152687-902 B	152685-903 A	152687-902 B
	S15662-992 LA	S15663-991 LB	S15662-992 LA	S15663-991 LB
Shuttle race body 	152682-101 A	152686-101 B	152682-101 A	152686-101 B
Tension spring 	104525-001	107606-001	104525-001	S06548-001 C
Thread take-up spring 	145519-001	144588-001 B	145519-001	144588-001 B
Needle bar thread guide  	S41222-101 B	152890-001 A	S41222-101 B	S02439-001 B

\*◎: Common with the LK3-B430E.

## Different parts list

Spec. Part name	Medium materials	Heavy materials	Inner clamping device	Extra heavy materials
Needle assy	107415-414 ◎	S37928-419 ◎	145646-414 ◎	145646-425 ○
Needle 	DP × 5 #14 107415-014 ◎	DP × 17 NY #19 S37928-019 ◎	DP × 17 NY #14 145646-014 ◎	DP × 17 NY #25 145646-025 ○
Work clamp blank 	434-1R S42030-001 ◎	434-2R S42032-001 ◎	154256-101 A ◎	-
	434-1L S42031-001 ◎	434-2L S42033-001 ◎		
Feed plate blank 	434-1 S42034-001 ◎	434-2 S42035-001 ◎	434-R1 S43459-001 ◎	-

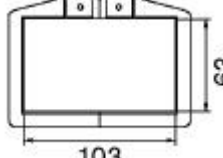
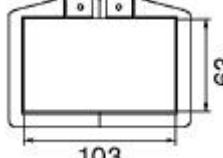
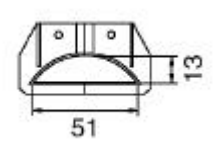
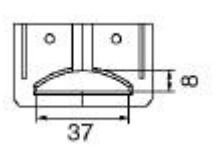
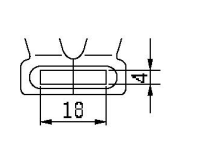
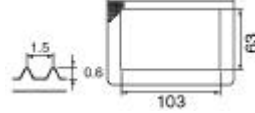
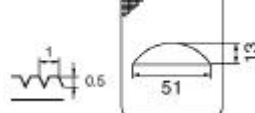
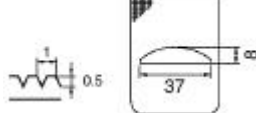
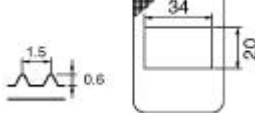
\*◎: Common with the LK3-B430E.

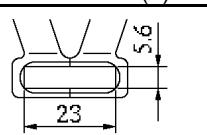
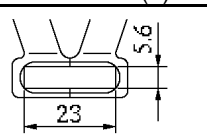
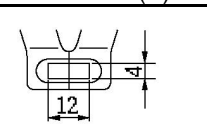
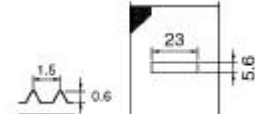
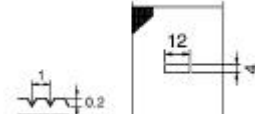
○: Common with the BAS-311E.

## Gauge parts list

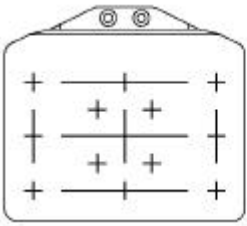

Optional gauges are listed in the following table.

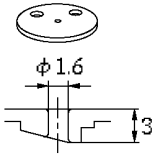
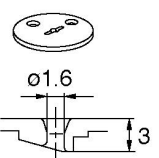
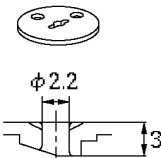
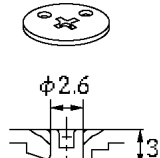
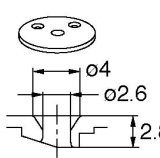
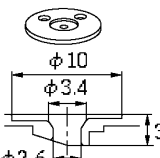
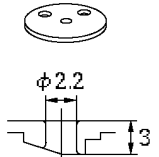
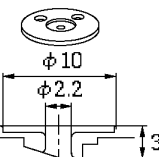
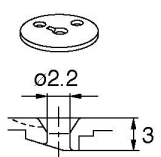
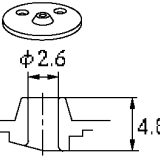
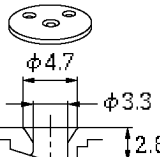
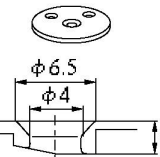
Each work clamp pair is used in combination with the feed plate directly below them.

	1	2	3	4
R	153493-001	S23377-001 (519)	S27836-001 (895)	156085-001 (M)
L	153498-001	S23378-001 (519)	S27837-001 (895)	156086-001 (M)
Work clamp, 				
Feed plate	153503-001	S23379-001 (519)	S23838-001 (895)	156087-001 (M)
				

	5	6
R	156082-001 (L)	156088-001 (S)
L	156083-001 (L)	156089-001 (S)
Work clamp, 		
Feed plate	156084-001 (L)	156090-001 (S)
		

# Gauge parts list

Gauge assy, 434E MK2	
S54984-001	
Home position standard plate	Screw
	

Needle hole plate											
A	S10211-001	AF	S51449-001	BZ	S41013-001	D	S29997-001	E	S10212-101	ED	S30925-001
								 <p style="text-align: center;">(For heavy materials)</p>			
F	S10213-001	FD	S30926-001	FM	S49980-001	H	S30450-001	L	S25127-001	M	S34348-001
				 <p style="text-align: center;">(For medium materials)</p>							
3	S40217-001										
